

Follow this Process to know your Operating System (OS) Status

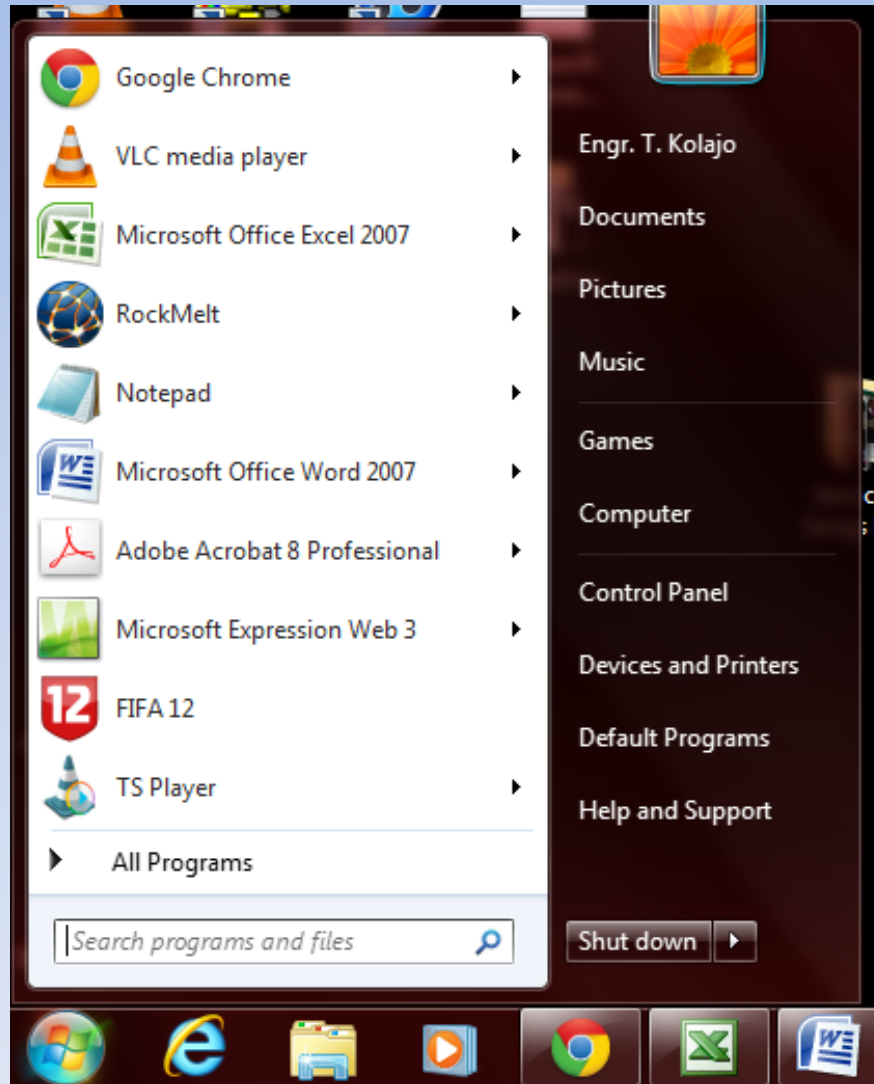
By: Kolajo, Tosin

Step 1: Locate and Click on "Start" Button on your Desktop

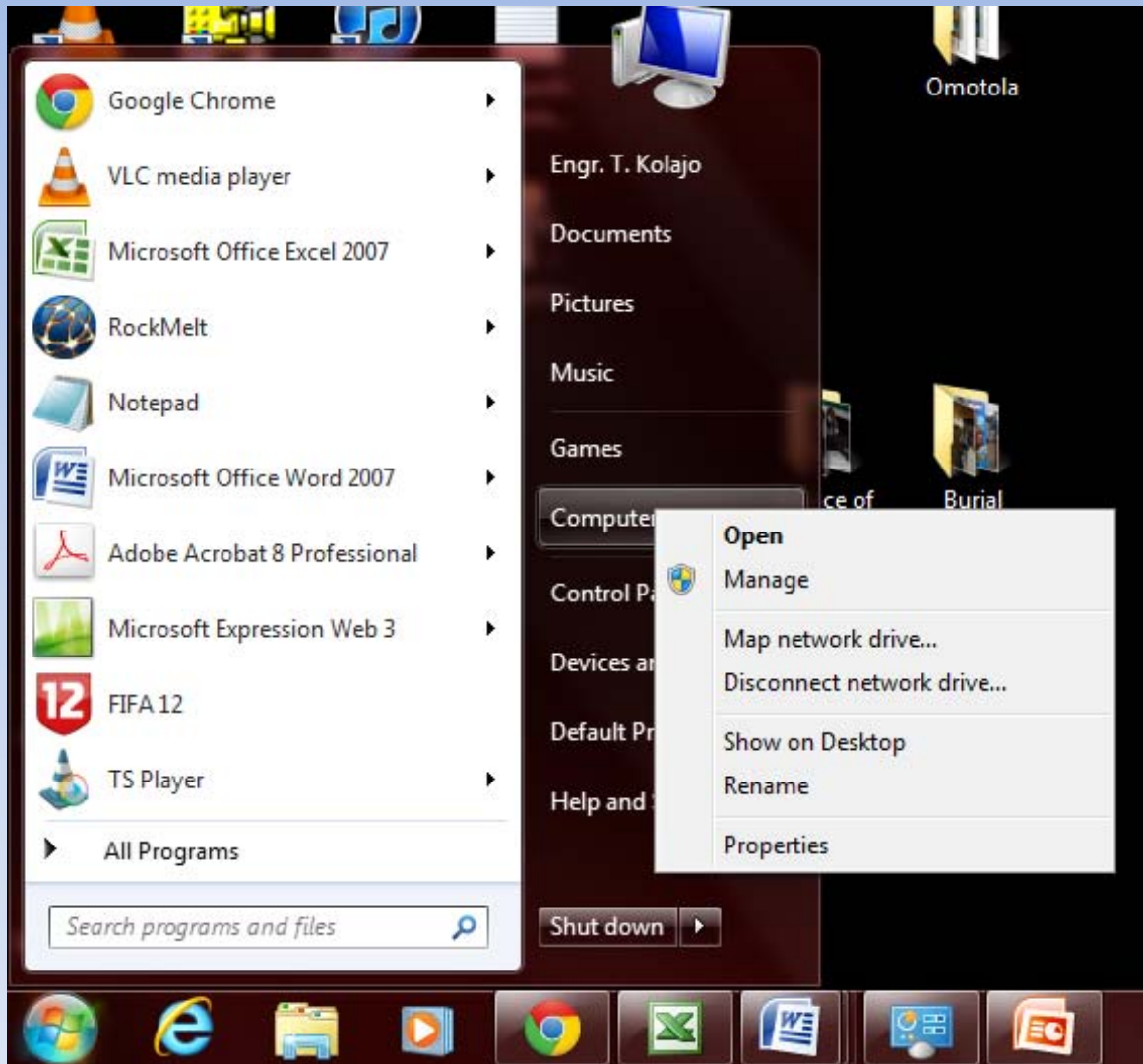


Start Button

This is what you have after Clicking the “Start Button”

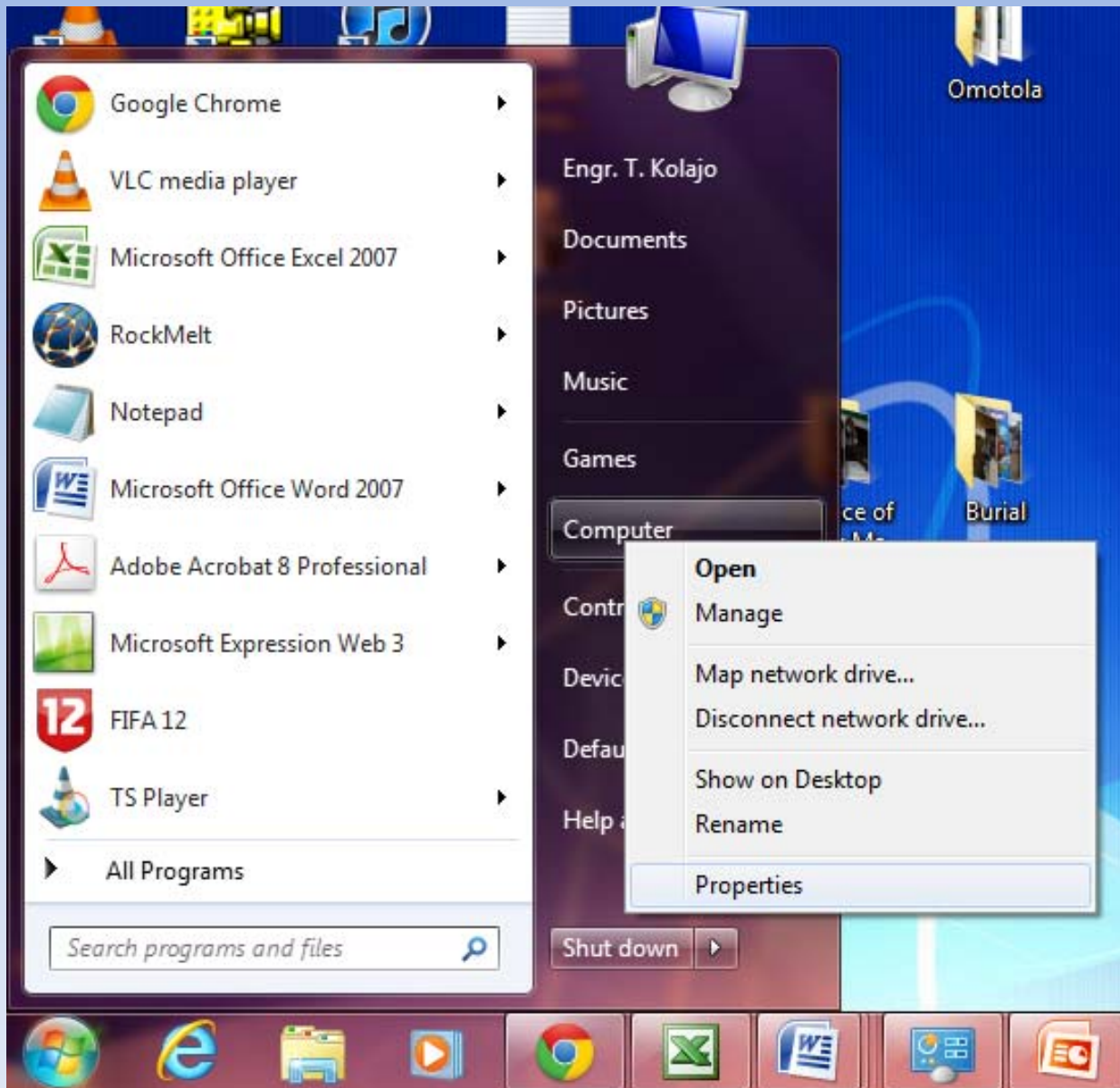


Step 2:



Locate “My Computer” and Right-Click to have the options under “My Computer”

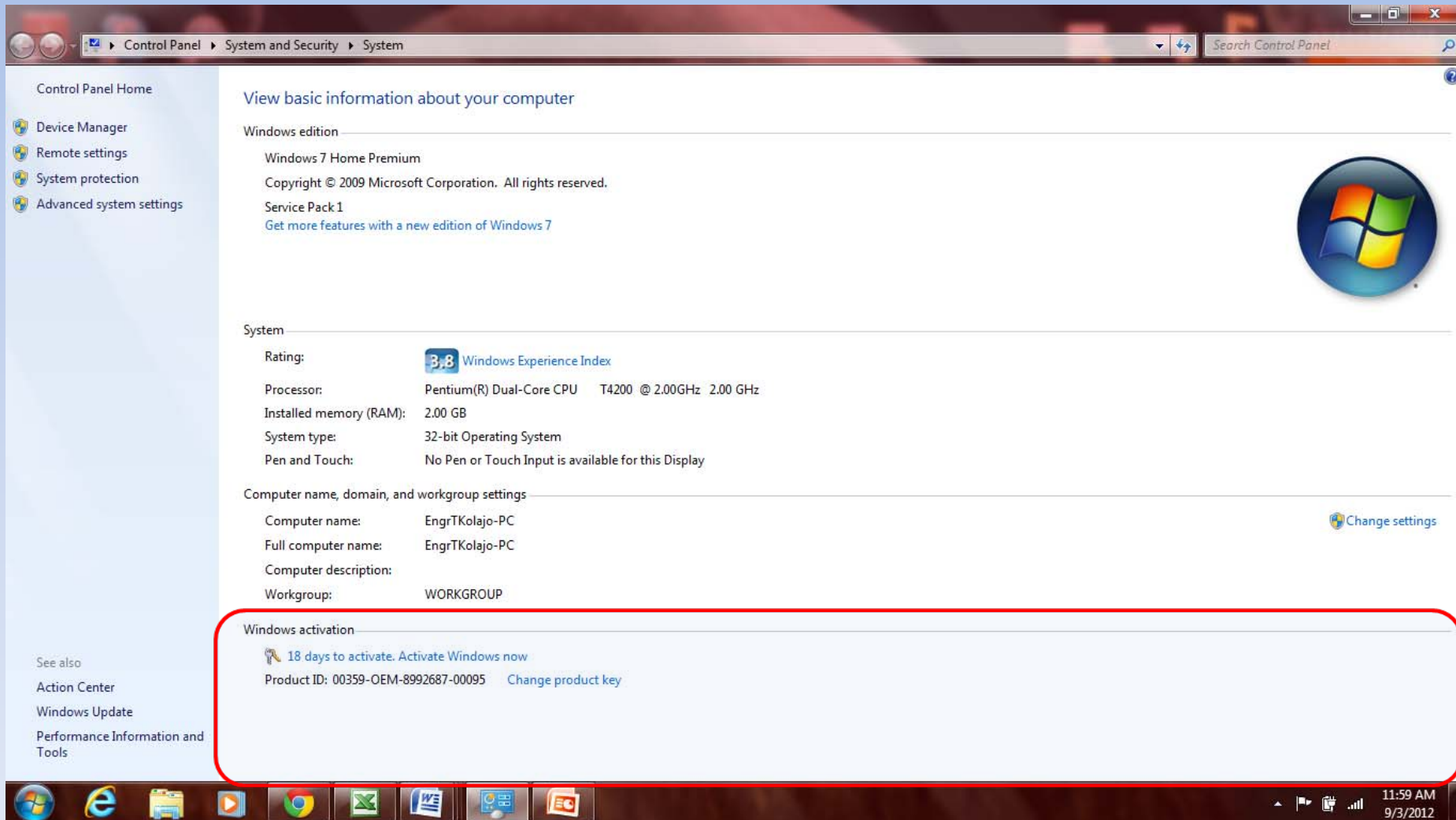
Step 3:




Select “Properties” after Right-Click on “My Computer”. Wait for an information about your Computer.

Step 4:

Check the Bottom of the Page that provides information about your Computer (Under Windows Activation) to know your Operating System Status



The screenshot shows the Windows 7 Control Panel window titled "Control Panel > System and Security > System". The main content area is titled "View basic information about your computer" and is divided into several sections:

- Windows edition:** Windows 7 Home Premium. Copyright © 2009 Microsoft Corporation. All rights reserved. Service Pack 1. [Get more features with a new edition of Windows 7](#)
- System:**
 - Rating: **3.8** Windows Experience Index
 - Processor: Pentium(R) Dual-Core CPU T4200 @ 2.00GHz 2.00 GHz
 - Installed memory (RAM): 2.00 GB
 - System type: 32-bit Operating System
 - Pen and Touch: No Pen or Touch Input is available for this Display
- Computer name, domain, and workgroup settings:**
 - Computer name: EngrTKolajo-PC [Change settings](#)
 - Full computer name: EngrTKolajo-PC
 - Computer description:
 - Workgroup: WORKGROUP
- Windows activation:**  18 days to activate. [Activate Windows now](#)
Product ID: 00359-OEM-8992687-00095 [Change product key](#)

The "Windows activation" section is highlighted with a red rounded rectangle. The taskbar at the bottom shows the Start button, Internet Explorer, File Explorer, Windows Media Center, Google Chrome, Outlook, Word, and PowerPoint. The system tray shows the volume icon, network icon, and the date/time: 11:59 AM 9/3/2012.

Titer Value

- **Windows Activated** = Your Operating System is Licensed
- **Windows not Activated** = Your Operating System is not Licensed or out of date
- **X Days to Activate Windows** = Your Operating System is Licensed for x number of days (Do not try to activate windows, you may develop)

Thank You!