

Handout for drafting skirt block

This handout is designed for:

- **Subject:** Home Economics or Basic Pattern Drafting course
- **Level:** For Beginners
- **Duration:** 1 hour

Designed by: Sarita Marooty

Topic: Drafting of a basic skirt block

Learning Outcomes

After completion of this handout, students will:

- Get used to handling tools for pattern drafting
- Develop motor skills for drafting paper patterns
- Have a basic pattern that can be manipulated for other styles.

Materials and Equipment Required:

- Paper for pattern
- Ruler
- Curved ruler or French curves
- Setsquare
- Pencil
- Eraser
- Tape measure

Measurements required (in centimeters):

1. Waist
2. Hips
3. Length of skirt
4. Waist to hips length

Steps involved for drafting a basic skirt block:

While following the steps refer to the diagram below.

1. Mark point 1 on the top left-hand corner of the paper.
2. Draw a horizontal line from point 1 using a setsquare.
3. Mark point 2 on the line whereby 1-2 is equal to $\frac{1}{2}$ hips measurement + 2.5 cm allowance.
4. Square down from point 1.
5. Mark point 3 on the line whereby 1-3 is the skirt length.
6. Square across from point 3.
7. Mark point 4 on the line whereby 3-4 is equal to measurement 1-2.
8. Join point 2-4.
9. Mark point 5 on line 1-3 whereby 1-5 equal to waist to hip measurement. Square across from point 5.
10. Mark point 6 on the line whereby 5-6 equal to $\frac{1}{2}$ measurement 1-2 + 0.75 cm allowance. Square down from point 6 to join the line 3-4 and mark point 6A.
11. On the line 1-2, mark point 7 whereby 1-7 equal to $\frac{1}{4}$ waist measurement + 2 cm dart allowance + 1.2 cm ease allowance.
12. Raise point 7 by 1 cm and mark point 8.
13. Mark point 9 on the line 1-2 whereby 1-9 is $\frac{1}{2}$ measurement 1-5 + 1 cm.
14. Draw a slight curve from point 1 to 6 either by using a hip curve or a French curve.
15. Draw dart on point 9 of 12 cm long and 2 cm wide (distributed on each side of point 9).
16. Draw curve from point 8 to 6.
17. Label back.
18. Mark point 10 on line 1-2, whereby 2-10 equal to $\frac{1}{4}$ waist measurement + 2 cm dart allowance.
19. Raise point 10 by 1 cm and mark point 11.
20. Mark point 12 on the line 1-2 whereby 2-12 equal to $\frac{1}{2}$ measurement 2-10 + 1 cm.
21. Draw a slight curve from 11-2.
22. Draw dart on point 12 of 10 cm long and 2 cm wide.

23. Draw curve 11-6.

24. Label front.

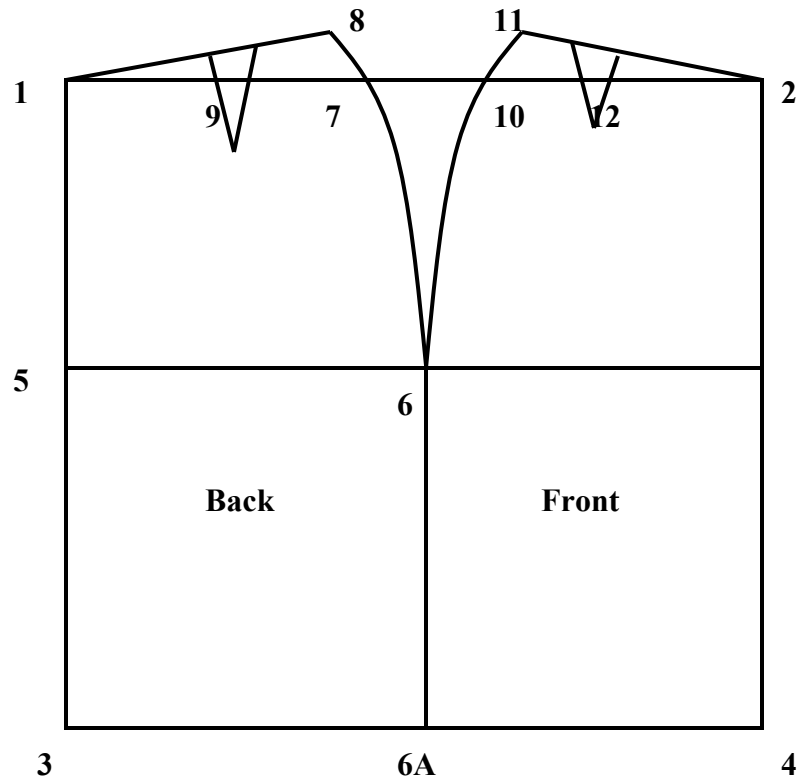


Diagram showing the draft of basic skirt block.